



**PTx**  
Trimble



**bilberry**

# GREEN ON BROWN NIGHT APPLICATION BOOKLET





# INTRODUCTION

Green on Brown (GoB) spot spraying technology has been around for a couple of decades now in the form of chlorophyll sensors which detect any living plants in bare paddocks and sprays only them to reduce herbicide usage. Bilberry's solution takes GoB Night to the next level by utilising the advancements in Artificial Intelligence (AI) to identify weeds in bare paddocks with high accuracy and efficiency.

Bilberry's **GoB Night** application allows users to spray herbicide in the right place at the right time in the right quantity. Utilising the GoB Night application is a smart move toward reducing the herbicide costs and improving the sustainability of users farms.

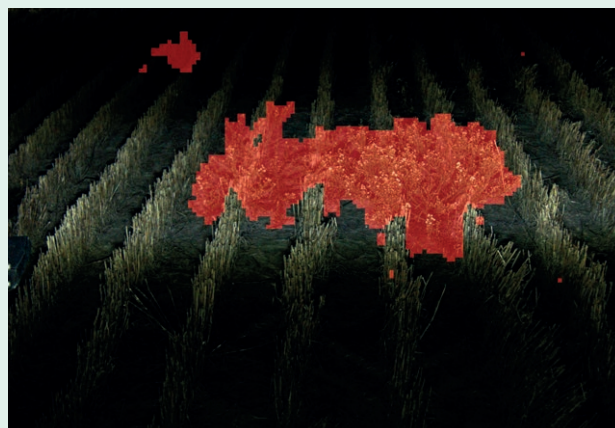
This booklet will set out best practice guidelines to ensure users maximise the benefits of the camera system and overall integrated weed management strategies on farm. Included our use cases and testimonials from a range of users, highlighting different approaches to obtain the same goal: sustainably optimising weed control at a whole farm scale.

# APPLICATION GUIDELINES

## Which weeds?

All weeds with a diameter > 5 cm, including:

- **Broadleaf weeds** (melons, roly poly, tar vine, fleabane, skeleton, etc.)
- **Grasses** (windmill, feathertop rhodes, button, etc.)



## Best timing?

Our cameras can detect what you can see when you're sitting on the boom: the lower the stubbles are, the better the results will be. 30 cm high stubbles is a reasonable size.



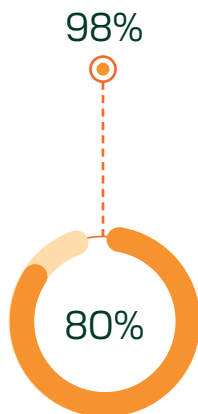
# SYSTEM BASICS AND BENEFITS

## Spray What You Can See

Cameras can be affected by high stubble loads. If they cannot see the weeds in question, they cannot spray them, it's as simple as that.

## Get Significant Chemical Savings

Average chemical savings are around 80% and can go up to 98% depending on the weed infestation in your paddock and the section size.



## Best Light Time

We recommend to turn on the lights 30 mins before sunset and turn them off 30 mins after sunrise.

There are many other benefits for your farm.

**Check them out [here](#).**

“

If you can see the weed with your eyes, the camera will see it.”

– Broden Holland, Bilberry User

**25** km/h  
recommended  
spraying speed

## Check Lights Are Clean

Before each night spraying session, make sure the lights are sufficiently clean. Clean lights will ensure optimal weed detection results.



# 03

## APPLICATION IN ACTION





## THANK YOU

Get in contact with us if you have any queries relating to your Bilberry system. We have a dedicated support team available to offer you assistance when you need it.

### Want to see more? Follow us on social media



[www.bilberry.io](http://www.bilberry.io)



[hello@bilberry.io](mailto:hello@bilberry.io)



[www.facebook.com/BilberryAgri](https://www.facebook.com/BilberryAgri)



[@BilberryAgri](https://twitter.com/BilberryAgri)

#### Disclaimer

The content and data presented in this document is correct at time of writing and contains some anecdotal information which may not align with the results you experience on your farm. If you are experiencing varied performance with your Bilberry system please bring it to the attention of your local sprayer representative or Bilberry support team member.



© 2024, PTx Trimble LLC. All rights reserved. PTx and associated Logo are trademarks of AGCO Corporation. All other trademarks are the property of their respective owners. PN 022503-2042 (07/24)

